

# FREMANTLE TERMINAL

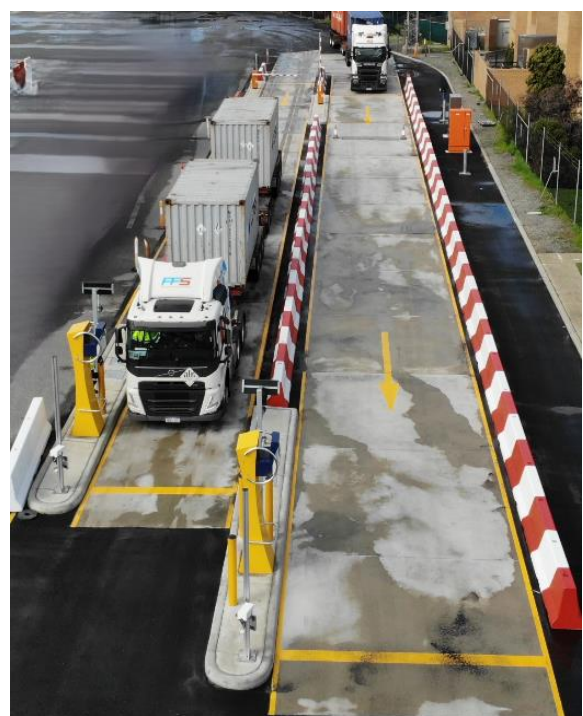
## WEIGH-IN-MOTION

### Truck Drivers guide to the DP World Fremantle Weigh in Motion (WIM)

1. Once truck is loaded with import container/s, proceed to WIM.
2. If driver requires container to be turned, this must be requested and actioned prior to proceeding to WIM.
3. Truck must stop at traffic lights at WIM entrance; driver is to engage all twist locks and ensure correct containers are on board prior to entering WIM.
4. **Entering Weigh Bridge** – Wait for barrier to lift and procced at a consistent speed of 5km/h through the weigh bridge, do not accelerate or break whilst transiting the weigh bridge. Stop at Camco Kiosk for data processing.
5. **Data Processing** – License plate recognition (LPR) is operational and will process data. If prompted, swipe MSIC card and enter BAT.
6. If truck axle groups are within GVM weight limits, driver will be given an exit ticket confirming OK to exit terminal.

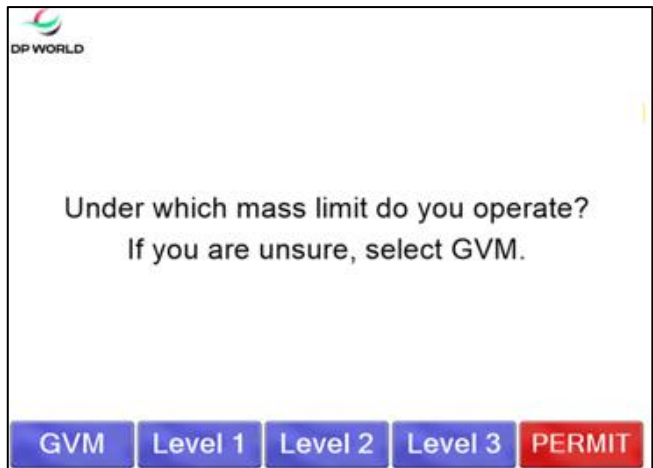


Traffic light system is to be observed when entering WIM.



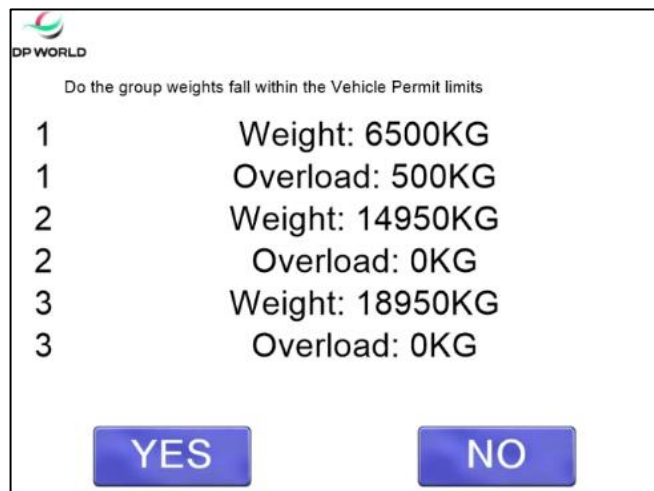
7. If any truck axle group exceeds GVM weight limits, driver will be prompted to select which mass limit they are operating:

- **GVM**
- **LEVEL 1**
- **LEVEL 2**
- **LEVEL 3**
- **PERMIT(s)**



GVM Screen Image

8. If driver selects '**PERMIT**' - Axle 'Group Weights' are displayed requesting driver to confirm if the Axle overload(s) fall within the Vehicle PERMIT(s) limit(s)? '**YES**' or '**NO**' option.



Example of 'PERMIT LIMITS' Option

9. If **YES**, driver will be given an exit ticket confirming OK to exit terminal.

10. If **NO**, driver has confirmed that truck exceeds permitted mass limit, and the 'Overweight return' process will commence. - *If **NO** and driver proceeds to exit, driver accepts full liability and terminal will notify fleet controller and/or appropriate person(s) accordingly.*

11. **Overweight Return Process** – Should a truck exceed permitted mass limit which they are operating and as confirmed by driver, container(s) will be required to return to yard. Driver will be prompted at Kiosk to confirm which container(s) should be returned to yard and will be given a new ticket with a yard location indication where truck is to proceed to.

- Trucks are to exit WIM as soon as data processing is complete to ensure truck flow is not impacted.
- Once you exit the WIM, please proceed to green zone located outside the R+D office to undo twist locks. If you require to contact your fleet controller prior to having containers removed, please do so in the green zone.